



CLOTH FACE MASK WITH FILTER POCKET

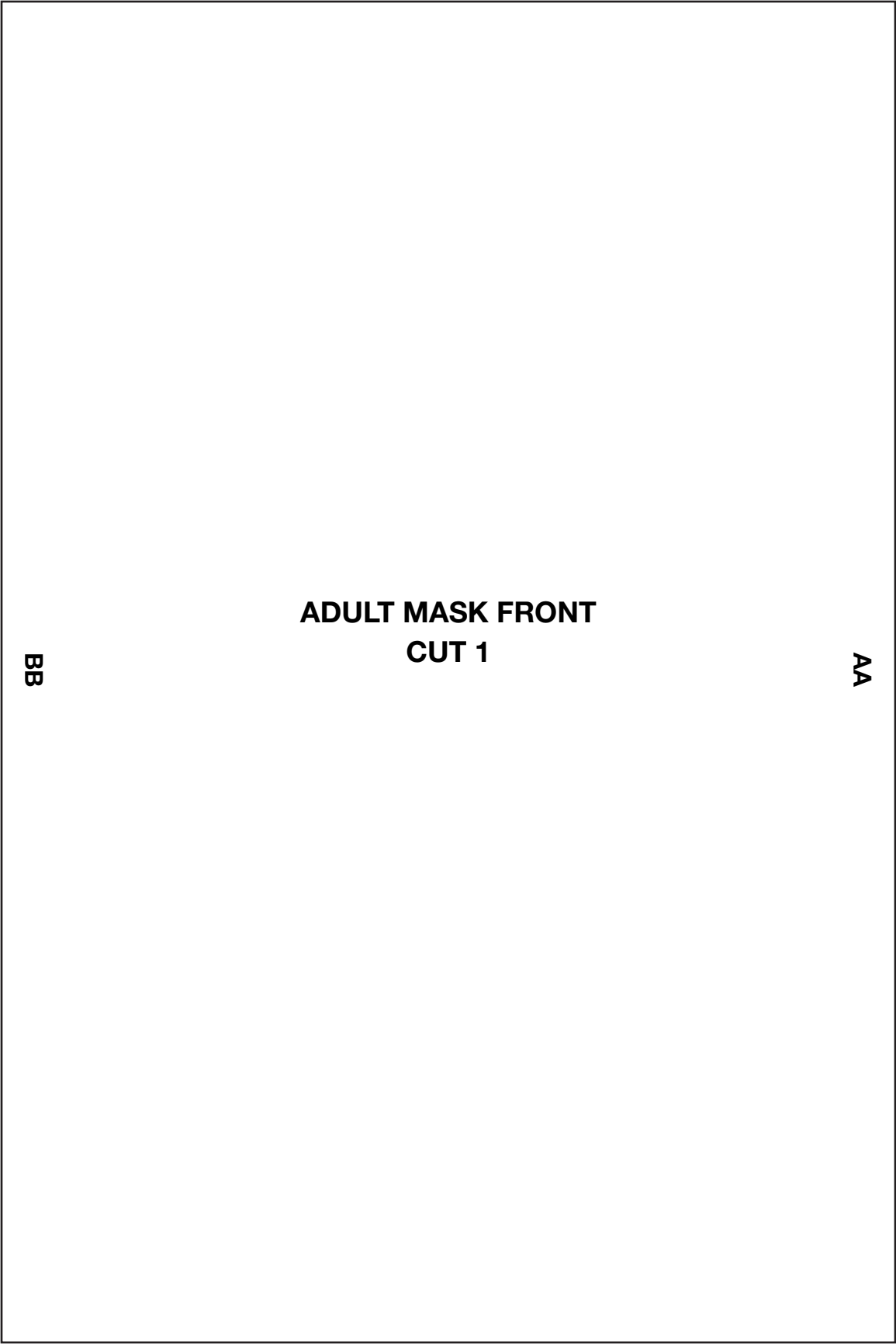
MATERIALS:

- Tightly woven cotton/cotton blend or double jersey knit fabric
- 2 pieces of elastic, 9" long (each piece)

DIRECTIONS:

1. Cut fabric layers according to pattern
2. Turn down 1/2" on each Back piece, sew
3. Right sides together, position Back 1 piece on the Front piece, raw edges aligned (AA), pin.
4. Position Back 2 piece on the Front piece, raw edges aligned (BB), pin.
5. Sew across (AA) and (BB)
6. Open back pieces, turn mask over (wrong side up)
7. Fold Back 1 down, fold Back 2 down
8. Sew down each side of mask.
9. Fold edge of Front piece over twice to make a casing, sew. (Repeat other side)
10. Guide elastic through casing, tie the loop. Repeat for other side.

SEE FOLLOWING PAGES FOR ILLUSTRATED GUIDELINES



**ADULT MASK FRONT
CUT 1**

9.5" LONG

BB

AA

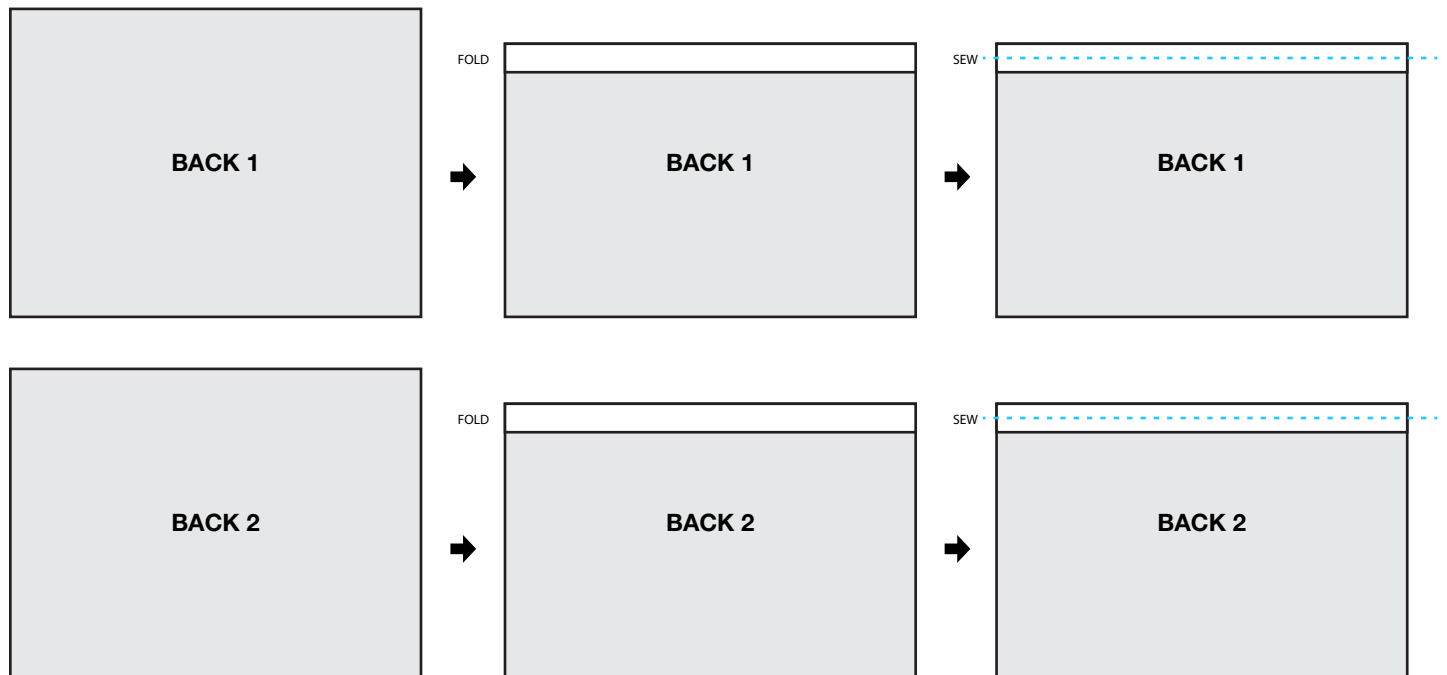
7.5" WIDE

7" LONG

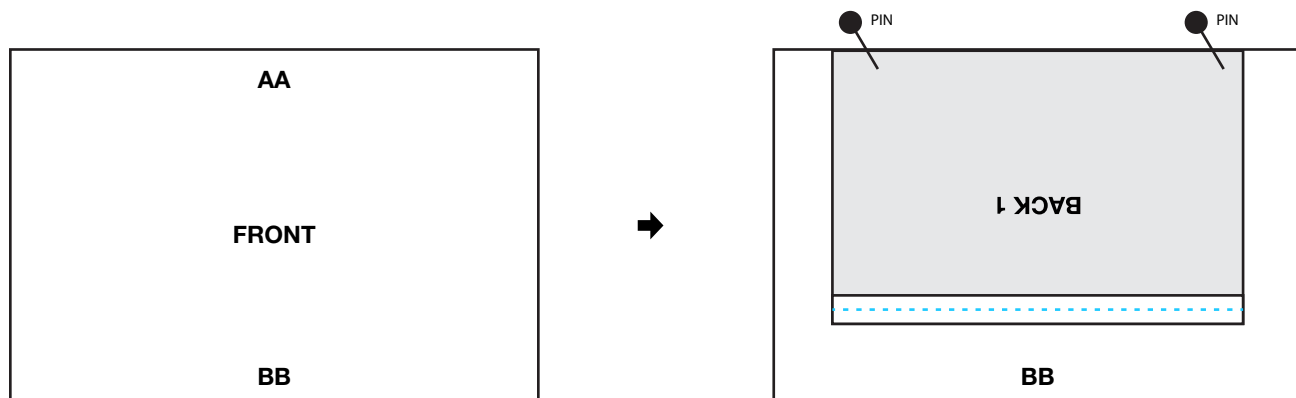
ADULT MASK BACK
CUT 2

5.25" WIDE

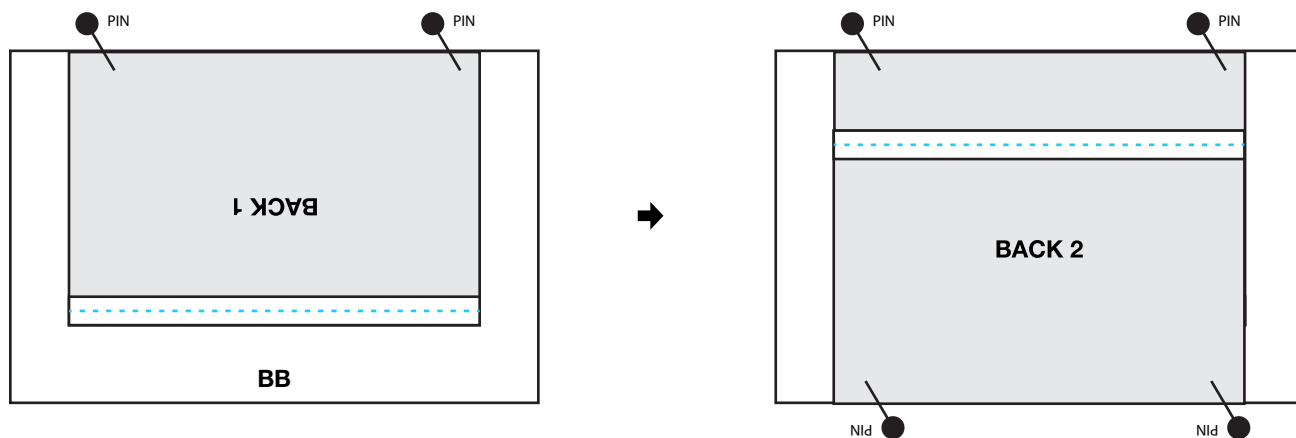
1. Turn 1/2" down on each back piece, sew across the top.



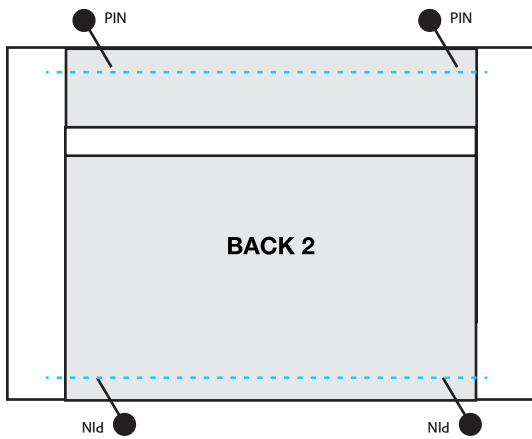
2. Right sides together, lay Back 1 so that the raw edge lines up to the top of the Front piece (AA). Pin in place.



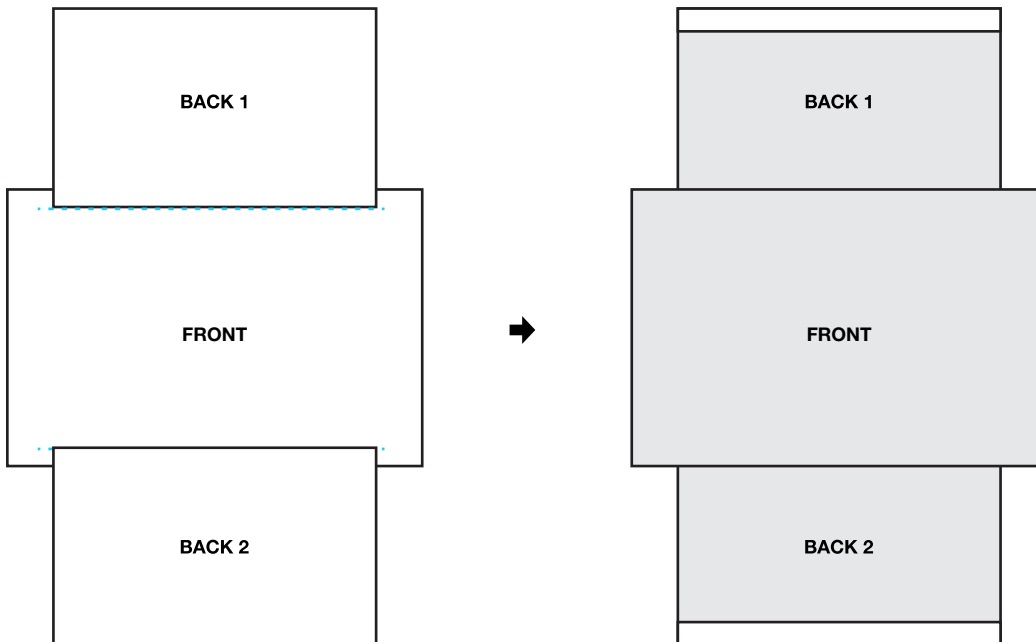
3. Right sides together, lay Back 2 so that the raw edge lines up to the bottom of the Front piece (BB). Pin in place.



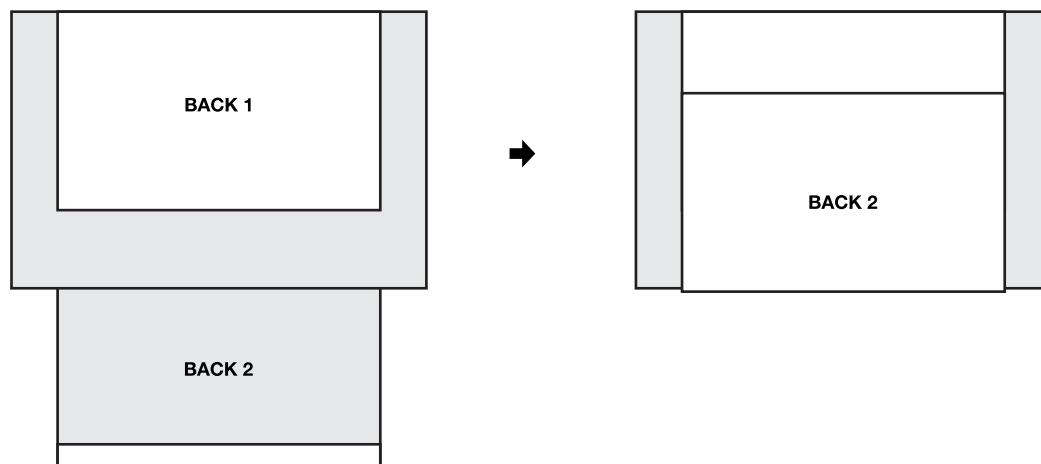
4. Sew along top and bottom edges (AA) & (BB)



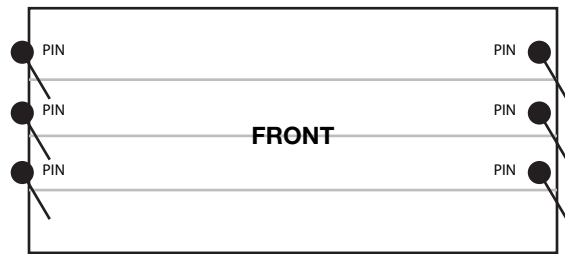
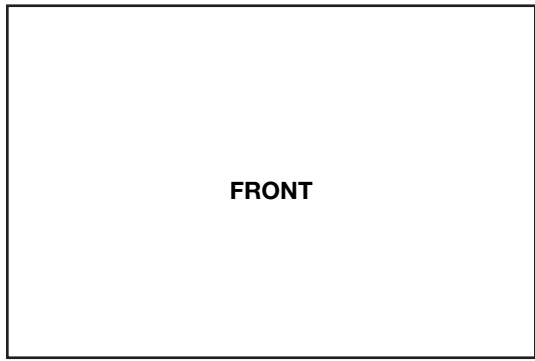
5. Open flaps, turn mask over.



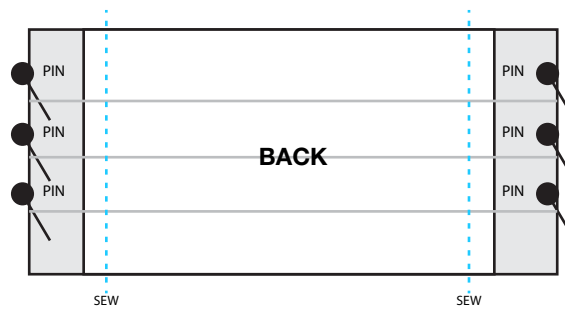
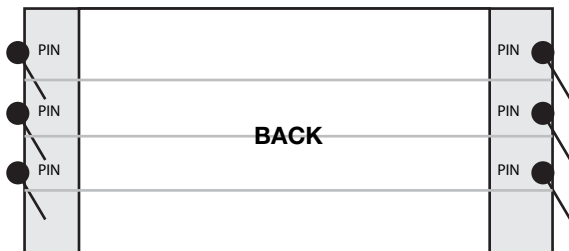
6. Fold Back 1 down over the front piece. Fold Back 2 up.



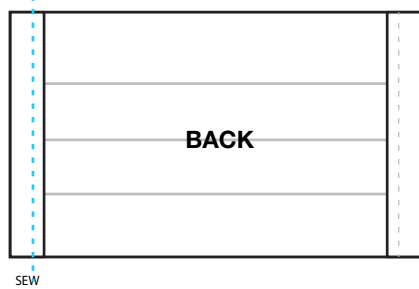
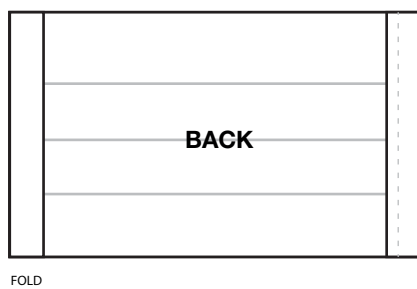
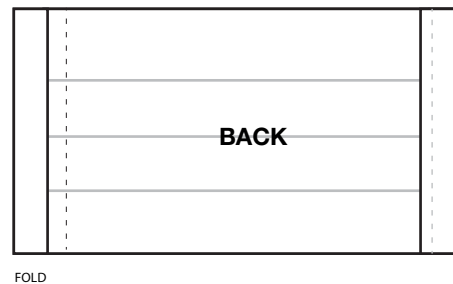
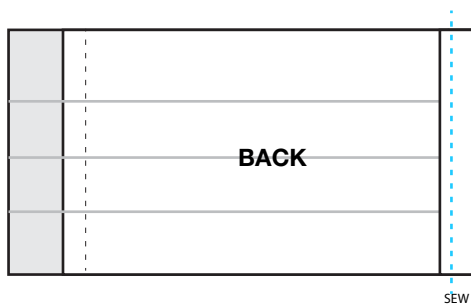
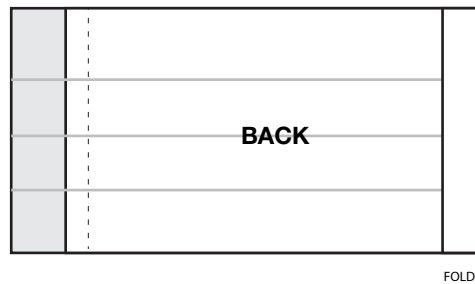
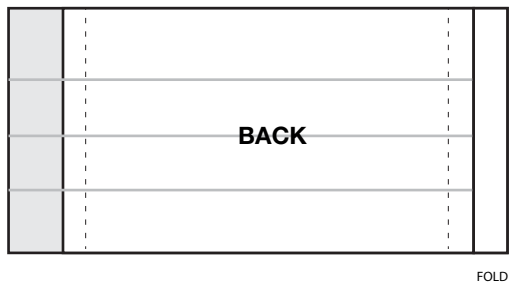
7. Turn mask over (Front facing up). Pinch and fold 3 tucks, pin each side.



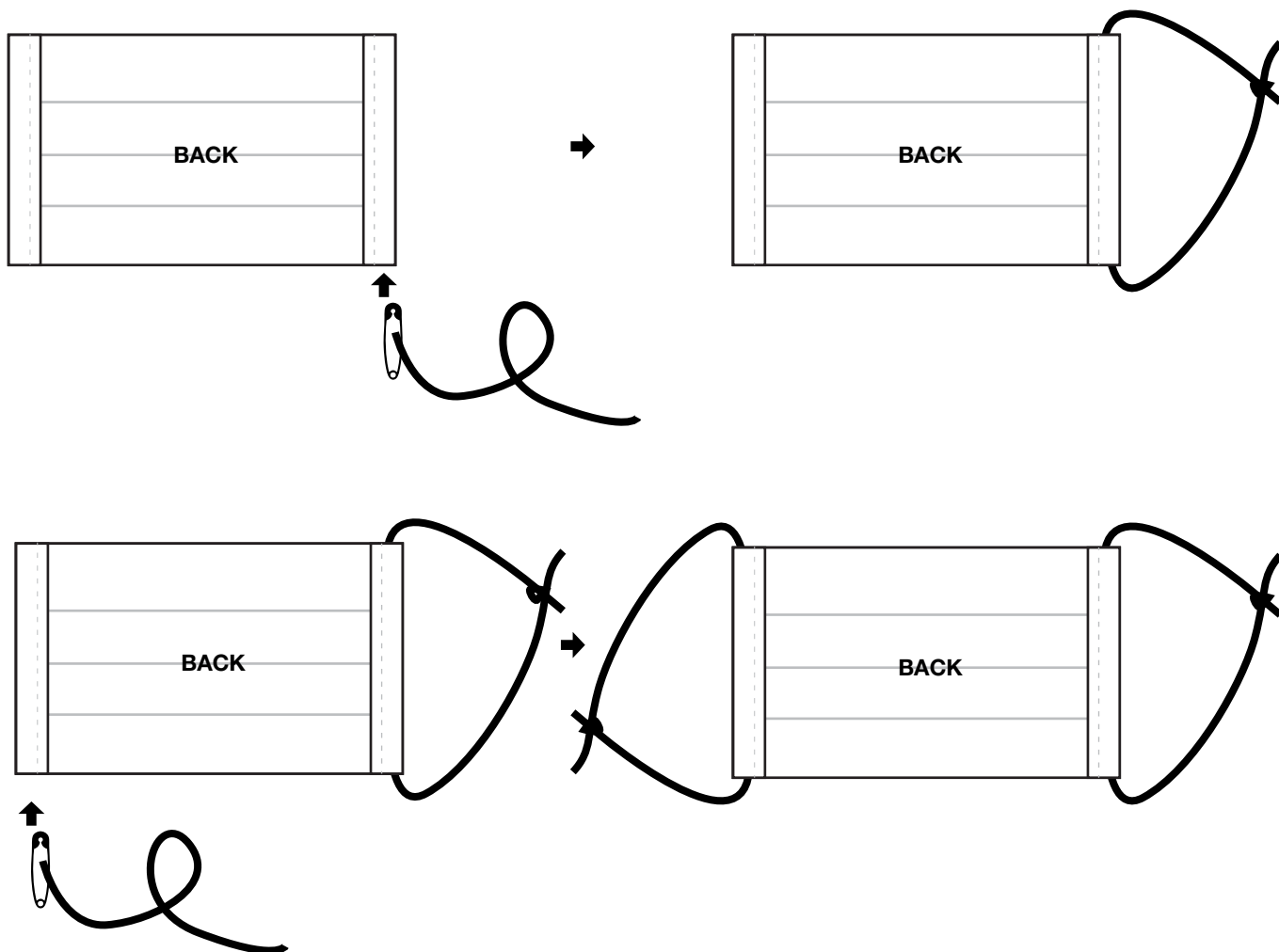
8. Turn mask over (Back facing up). Sew along Back edge over tucks.



9. Fold side over twice, sew to make a casing on each end.



10. Using a safety pin, guide elastic through the casing, tie together.
Repeat for the other end.



MASK COMPLETE! The pocket can accommodate a filter material.